



WELCOME PACKET

WELCOME TO THE
TREASURE ISLAND COMMUNITY

2024

VOL. 2



[ONETREASUREISLAND.org](https://onetreasureisland.org)



Table of Contents

Welcome Message 3

One Treasure Island 4

OneTI Services 5

Island History 6

Island Directory 8

Important Phone Numbers 11

Island Map 12

Transportation 13

Development Information 16

Get Involved 17

FAQs 18

Welcome Message



Sherry Williams
OneTI Co-Executive Director



Nella Goncalves
OneTI Co-Executive Director

Welcome to Treasure Island! On behalf of all of us at One Treasure Island, we hope you will enjoy your new home and community. At One Treasure Island, we strive to provide a variety of community resources, services and celebrations to support this growing neighborhood. As you will see in this welcome packet, there are many diverse resources and activities available to all community members here, on Treasure Island.

We hope you will find time to be a part of this community in whatever way feels comfortable to you. Please know that we are here to foster a supportive community in all its shapes and sizes. Whether it be through volunteering, taking a class, attending or leading a community event, utilizing a service—there are many ways that you too can be part of this community! So welcome to your new home and please feel free to reach out with any questions and ideas!

In community,


Sherry Williams


Nella Goncalves



One Treasure Island



One Treasure Island was founded in 1994 with the mission of providing opportunities for homeless and low income San Franciscans through the redevelopment of former Navy Base Treasure Island. To create a true feeling of belonging for all in this Island community, One TI expanded its mission to include creating a vibrant and inclusive community on Treasure Island through intentional planning around retail, community facilities & services and transportation.

For over 25 years, One TI has proudly provided job brokering services, pre-apprenticeship training programs, financial education and coaching, food pantry services, a place to congregate for community events, and so much more to Treasure Island's diverse and ever-expanding population.

With core values such as community, collaboration, and equality, One Treasure Island is committed to stewarding an equitable, diverse, and thriving community for all Treasure Island residents, employees, businesses, and visitors.



Follow us on social media!



OneTI Services

1 Construction Training Program

The Construction Training Program (CTP), is a comprehensive 8-week, 40 hour a week pre-apprenticeship training program designed specifically to take clients at any skill level and prepare them for successful entry to union positions in the construction industry.

2 Job Broker Services

Established in 1998 to meet the hiring goals on Treasure Island, the OneTI Job Brokering System has been providing qualified personnel for full-time, part-time, and temporary positions on Treasure Island in a variety of roles.

3 Financial Services

Our Economic Self Sufficiency Program (ESSP) makes a point of providing as many resources to clients as possible in order to bolster their financial proficiency and give them the tools they need to ground themselves financially.

In addition to the above services and referrals, One Treasure Island provides free tax preparation every year from January to the conclusion of tax season, and back taxes assistance up to four years.

4 Food Pantry

The Treasure Island Food Pantry is part of the San Francisco Food Bank's Neighborhood Food Pantry Program. The Food Bank provides both staples and fresh produce. The Food Pantry is operated by One Treasure Island, along with the help of a lead pantry coordinator and tremendous help from Program clients, Catholic Charities & Home Rise staff and resident volunteers.

5 Community Building

One Treasure Island works closely with island residents and community partners to bring a plethora of events, workshops, activities and leadership opportunities to residents throughout the year.

6 Affordable Housing **

Our work is to create and provide opportunities for affordable housing for low-income and formerly homeless San Franciscans through planning, advocacy and providing technical affordable housing development assistance.

With over 2,000 affordable units to be built, 435 of which will serve formerly homeless families and individuals, this work is imperative to meeting our equity goals and agenda.

** One Treasure Island does not provide housing directly. Individuals and families are provided housing directly through One Treasure Island Member Agencies.

Please visit onetreasureisland.org for more details.

Treasure Island's History

1936

The 400 acre artificial island was built by the Army Corps of Engineers in on the shoals of neighboring Yerba Buena Island. Constructed of mud dredged from the Bay, it may have been named for the gold its soil might contain. The federal government paid for its construction and for three permanent buildings which would serve a potential future airport.



1939

The original purpose of Treasure Island was to host the 1939-40 Golden Gate International Exposition. The GGIE was a glowing Art Deco "Magic City" of towers, gardens and dazzling lighting effects created to celebrate the ascendancy of California and San Francisco as economic, political, and cultural forces in the Pacific region.



1940

The fair also celebrated the local engineering achievements of the Golden Gate and San Francisco-Oakland Bridges and the birth of transpacific air passenger service with the advent of the Pan American Airways Clippers. The fair billed itself optimistically as "A Pageant of the Pacific."



1941

The U.S. Navy moved onto Treasure Island as America prepared for World War II. The island became a major training and education center, with 4.5 million personnel shipped overseas from Treasure Island. By the time the war ended in 1945, aviation had changed dramatically. The Pan Am Clippers were no longer in regular service, and the island was never developed as an airport. The Navy stayed on.





1994

Base Closure Community Redevelopment and Homeless Assistance Act (the "Act") is introduced. The Act requires the Local Reuse Authority to propose a plan for using Base resources to assist homeless persons. The Treasure Island Homeless Development Initiative (TIHDI), a collaboration of community based organizations, was formed to develop the homeless component of the land use plan for redevelopment under the Act.



1997

Naval Station Treasure Island was officially closed and leased to the City of San Francisco. Shortly afterwards, the enormous hangar buildings were converted to sound stages for feature films such as The Matrix, Parent Trap, and television shows such as Nash Bridges and Discovery Channel's Prototype This!



2018

TIHDI becomes One Treasure Island!

The island is open to the public and is home to over 2,000 residents, commercial tenants, restaurants, schools, arts and athletic organizations and community organizations, and a Job Corps campus. One Treasure Island works with all of the island residents, providing services and resources around affordable housing, job training and placement, food security and community programming.



2036

Current development projects are projected to be complete and will include an adaptive reuse of historical buildings on Yerba Buena Island as well as new housing, commercial, retail, hotel and open space. Specially, the following is planned on the Island: up to 8,000 homes; 140,000 square feet of new commercial and retail space; 100,000 square feet of new office space; 500-room hotel; and 300 acres of parks and public open space. Additionally, this project creates a town center and also includes a ferry terminal, retail district, plaza, and a 400-slip marina.





Island Directory

Affordable Self Storage

750 Avenue E
415-213-4892
storageinsanfrancisco.com

City View Commissary

900 Avenue D
415-542-6099
cityviewcommissary.com

Community Garden

Gateview Ave at
Exposition Drive

Dependable Movers SF

425 Ave M
628-201-6674
dependablemoverssf.com

Gold Bar Whiskey Tasting Room

1 Avenue of the Palms
(415) 592-2177
goldbarwhiskey.com

Island Cove Market

800 Avenue H
(415) 391-2299
islandcovefoodcourt.com

Island Park Storage

800 Avenue H
(415) 890-6484
islandparkstorage.com

Machinery Planet

1000 California Ave
(415) 744-4187
machineryplanet.com

Aracely Restaurant

401 13th St #312
415-678-5724
aracelysf.com

City View Storage

425 Avenue M
415-517-7390

Community Gather Garden

850 Ave I
(415) 986-4810

Extranomical Tours

425 Ave M
(415) 357-0700
extranomical.com

Hillsong Church San Francisco

401 13th St #312
hillsong.com/usa/sanfrancisco/

Island Creative

750 8th St
(415) 834-0641
island-creative.com

Life Learning Academy

651 8th St
(415) 397-8957
lifelearningacademysf.org

Mersea

699 Avenue of the Palms
mersea.restaurant/



Island Directory

Moto Guild

849 13th St
(415) 624-3795
motoguild-sf.com

One Treasure Island

1 Avenue of the Palms, Room 166
(415) 274-0311
onetreasureisland.org

Rockstar Pro Movers

1131 Mason Ct E
(628) 222-3399
rockstarpromovers.com

Sailing Science Center

1 Avenue of the Palms, Ste 16A
(510) 390-5727
sailingscience.org

SFGG Rugby Foundation

401 13th St, Field B
628-201-6674
admin@sfggrugby.com

SFPL Book Kiosk

800 Avenue H
sfpl.org/locations/treasure-island

Skyline Events SF

601 Avenue of the Palms
(415) 307-4617
skylineeventssf.com

TI Drive Up Self Storage

710 13th Street
(415) 654-5583
selfstorageeti.com

Nurse Clinic

800 Avenue H
415-874-9910

Resident Support Line

(415) 800-5937

Rubicon Landscaping

335 13th St
(415) 395-9208

SF Drone School

751 13th St
(888) 577-0428
sf-drone-school.business.site

SFPL Bookmobile

Ave H and 11th St
(415) 554-9081

Ship Shape Community Center

850 Ave I
(415) 986-4810
onetreasureisland.org

TI Development Authority

1 Avenue of the Palms #241
(415) 274-0660
TIDA@sfgov.org

TI Job Corps

351 Avenue H
(415) 277-2400
treasureisland.jobcorps.gov



Island Directory

TI Skate Park

600 Avenue M

Treasure Island Museum

1 Avenue of the Palms #111

(415) 413-8462

treasureislandmuseum.org

Treasure Island Sailing Center

698 California Ave #112

(415) 421-2225

tisailing.org

Treasure Island Wines

995 9th St #201

(415) 394-9463

tiwines.net

UHAUL Neighborhood Dealer

800 Avenue H

(415) 956-1395

uhaul.com

Woods Beer

1 Avenue of the Palms

woodsbeer.com/island-club/

TI YMCA

749 9th St

(415) 765-9037

ymca.org

TI Child Development Center

850 Avenue D

(415) 834-0614

catholiccharitiessf.org

Treasure Island Yacht Club

1 Avenue of the Palms #133

(415) 434-4475

Treecraft Distillery

849 Avenue D

(415) 271-3457

treecraftdistillery.com

United Site Services

790 4th St, Avenue M

(800) 864-5387



Important Numbers

911

Call 911 for emergencies **ONLY WHEN USING A LANDLINE.**

415-553-8090

Calls 911 for emergencies **WHEN USING A CELL PHONE.**

311 or 415-701-2311

To report burnt out streetlights, sewer overflows on the street, water main break or street flooding, damaged fire hydrant, downed or hazardous trees, clogged storm drains, street defects/ potholes, graffiti removal, etc.

Admiral Security

415-760-0406

Treasure Island's security, call if you see or suspect something suspicious that's **NOT** a reportable crime.

DPW

415-760-5016

Dumping and trash pickup for commercial areas on Treasure Island.

Operation Outreach

415-553-0123

Operation Outreach officers are available to assist the community with homeless and quality of life issues.

SF Crisis Hotline

phone: 415-781-0500 text: 415-200-2920

Mental health or suicide care.

A Woman's Place

415-487-2140

Medical and mental health care, aid, clothing, food, safe shelter and case management for chronically homeless women.

EMERGENCY
ON TREASURE ISLAND?

USING A
LAND LINE? **911**

USING A CELL
PHONE? **415-553-8090**

ONE TREASURE ISLAND

Visitor Map

** Due to the redevelopment, changes to this map are constant and frequent.



ATTRACTIONS:

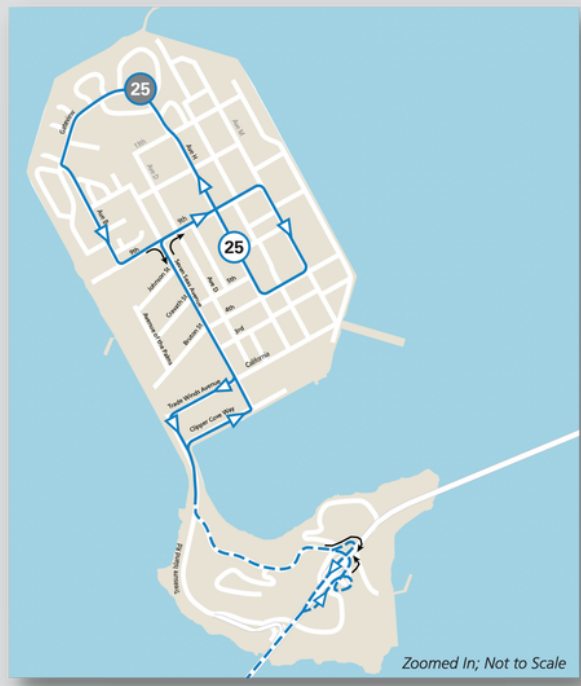
1. Goldbar Whiskey Tasting Room
2. Treasure Island Museum
3. Woods Island Club
4. Mateo's Hot Dog Stand
5. Ferry Terminal
6. Signal Art Installation
7. Mersea Restaurant
8. EV Charging Stations
9. Aracely Café and Event Center
10. Island Cove Market
11. Treasure Island Wines

FACILITIES:

- Recreational Fields
- Playgrounds
- Skate Park
- Tennis Court
- Dog Park
- Parking

Transportation

The 25 Muni bus line travels directly to and from Treasure Island via the Salesforce Transit Center.



Single Ride - Adult (ages 19-64)
 Adult single ride fare on Muni vehicles, good for 120 minutes of travel

MuniMobile	\$2.50
Clipper®	\$2.50
Cash	\$3.00
Metro Ticket Machine	\$3.00

Single Ride - Discount
 Single ride fare for Seniors (65+) and People with Disabilities good for 120 minutes of travel

MuniMobile	\$1.25
Clipper®	\$1.25
Cash	\$1.50
Metro Ticket Machine	\$1.50

Free Muni for All Youth (18 years and younger)
 Providing youth free access to Muni with the exception of Cable Cars

Free Muni for Seniors (ages 65+)
 Providing eligible low-to-moderate-income San Francisco residents free access to Muni
Clipper® \$0.00

Service Frequencies

Schedule	Morning	Midday	Evening	Late Night	Owl
Weekday	15	15	20	20	30
Weekend	20	20	20	20	30

Transportation cont.

A ferry operates between the Treasure Island Ferry Terminal and San Francisco's main Ferry Terminal.



Weekdays (Mon – Fri)

Weekends (Sat – Sun & I Holidays)

TREASURE ISLAND	DOWNTOWN SF/GATE B	TREASURE ISLAND	DOWNTOWN SF/GATE B
7:30am	7:50am	9:30am	9:50am
8:10am	8:25am	10:15am	10:35am
8:45am	9:05am	11:00am	11:20am
10:20am	10:40am	12:00pm	12:20pm
11:30am	11:50am	12:45pm	1:05pm
12:15pm	12:35pm	1:30pm	1:50pm
1:00pm	1:20pm	3:30pm	3:50pm
3:00pm	3:20pm	4:15pm	4:35pm
3:55pm	4:15pm	5:00pm	5:20pm
4:35pm	4:55pm	6:15pm	6:35pm
5:50pm	6:10pm	7:00pm	7:20pm
6:30pm	6:50pm	7:45pm	8:05pm
7:15pm	7:35pm	8:30pm	8:50pm
8:00pm	8:20pm		

**The ferry terminal on Treasure Island is located at 2 Avenue of the Palms, directly across the street from Building 1.

FERRY CONTACT INFORMATION

Transportation cont.

Van Gogh Shuttle

Van Gogh is a van shuttle service provided by SF Paratransit for groups of older adults and/or people with disabilities to attend social and cultural events in San Francisco. Examples of Van Gogh trips include:

- Trips to museums
- Concerts
- The theatre
- Golden Gate Park
- Church meetings
- Public meetings, and more!



Scan to learn more!



Essential Trip Card

The ETC program subsidizes about two to three round trips by taxi per month for older adults (persons 65 and older) and people with disabilities. Eligible participants pay 20% of the cost of a regular cab ride fare for essential trips. The program uses taxis to take people on essential trips like going to the grocery store, pharmacy or another necessary medical trip. Customers who pay \$12 will receive \$60 value for taxi trips on a debit card.



Scan to learn more!

Shop-A-Round Shuttle

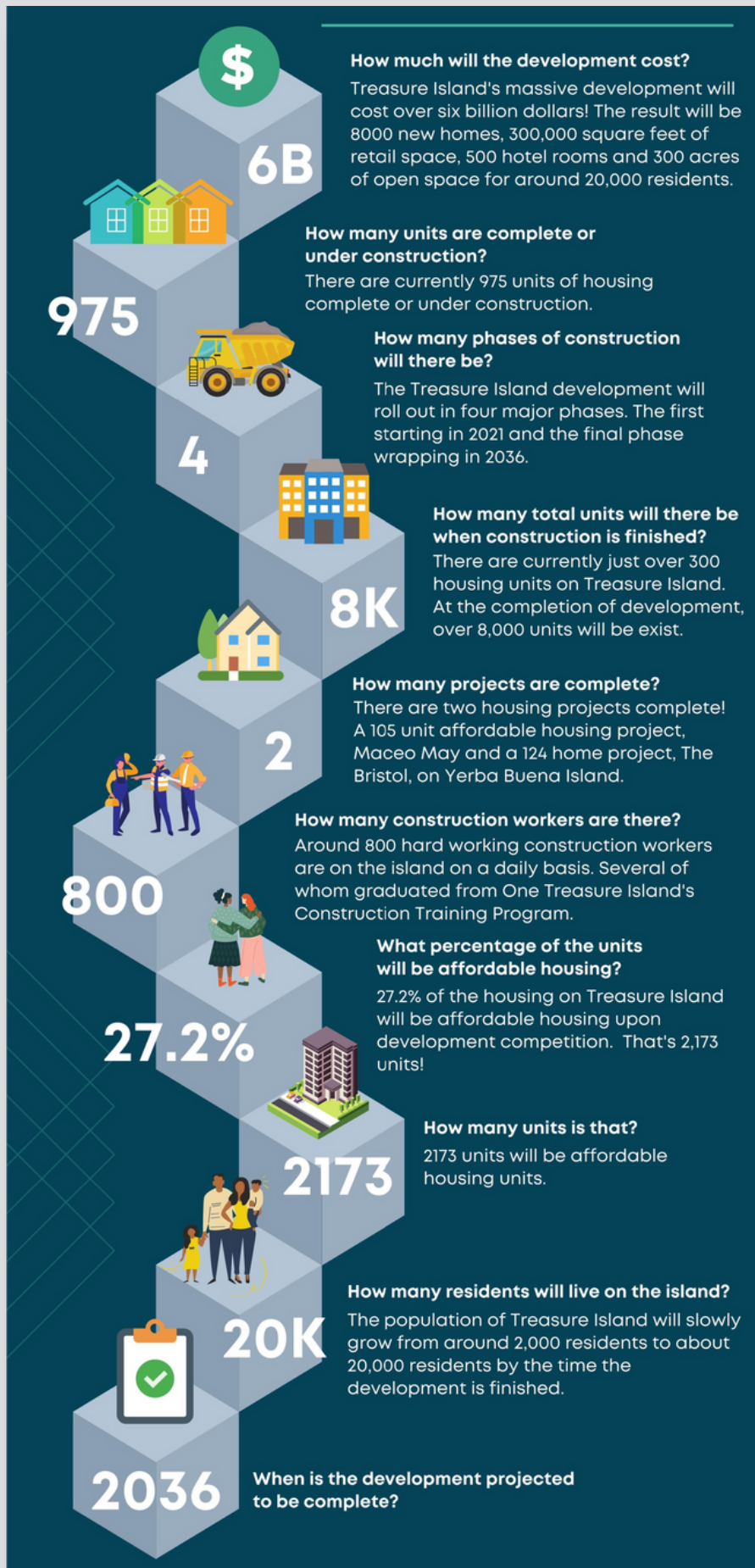
Shop-a-Round is a convenient, low-cost shuttle that makes it easier to go grocery shopping. The shuttle takes groups of riders to grocery stores or supermarkets in San Francisco where they want to shop. The service offers registered older adults and people with disabilities personalized assistance that is not available on Muni bus and rail lines.



Scan to learn more!

Development Info

Scan for more information on the development:



Get Involved



Participate

The easiest way to get involved and get to know your community is to participate within One Treasure Island's community building network! There are always events, workshops and activities on the horizon. Join One Treasure Island's mailing list on our website, onetreasureisland.org or text **ISLANDNEWS** to **855-710-0321** to receive announcements texted right to your smartphone!

Volunteer

There are lots of ways to volunteer with One Treasure Island! If you are interested in hearing about the current volunteer opportunities, please email: rbinkley@onetreasureisland.org

Emergency Task Force

Take action by becoming part of Treasure Island's Emergency Task Force. Being on an island in the middle of the bay in earthquake country means that we need to have our disaster planning on point. If you are a quick thinker and problem solver, we'd love to have you as part of our ETF. Meetings are held every other month and opportunities to become NERT certified are also available. To learn more about Emergency Task Force, please email: afrancois@onetreasureisland.org

Fill Out This Survey

One Treasure Island is looking to collect data from all new island residents. To fill out the simple survey and provide your information, please scan the QR code.



FAQs

1 Is Treasure Island part of San Francisco?

Yes! Treasure Island is an artificial island in the San Francisco Bay and a neighborhood in the City and County of San Francisco.

2 What district is Treasure Island in?

Treasure Island is part of District 6 of the City and County of San Francisco.

3 What is TIDA?

The Treasure Island Development Authority (TIDA) is a non-profit, public benefit agency dedicated to the economic development of former Naval Station Treasure Island. The Authority is vested with the rights to administer Tidelands Trust property. TIDA is also responsible for administering vital municipal services to Treasure and Yerba Buena Islands.



4 Who are the members of OneTI?

One TI is comprised of members organizations that provide housing , affordable housing development, services and job training and employment on Treasure Island. These are: Catholic Charities, Chinatown Community Development Center, HealthRight 360, HomeRise, John Stewart Company, Mercy Housing, Rubicon Programs, Swords to Plowshare, Toolworks and YMCA.

5 Who are OneTI's partners?

Collaboration and developing positive working relationships with a diverse group of organizations & individuals has been and will continue to be key to developing Treasure Island's new community.



FAQs cont.

6 Can residents use the recreational fields?

Yes! The Athletic Fields are available for use to the Residents of Treasure Island. San Francisco Little League (SFLL) Ketcham Field located at 8th Street and Avenue M and San Francisco Golden Gate Rugby (SFGGR) Field located at 13th Street and Avenue H are open daily to Residents when not in use by SFLL or SFGGR. To confirm availability, please visit www.sfll.org and www.sfggrugby.com.



7 What school district is Treasure Island in?

Treasure Island is part of the San Francisco Unified School District (SFUSD). To learn more, please visit <https://www.sfusd.edu/> or scan the QR code,



8 Who is developing Treasure Island?

Treasure Island is being developed by TIDG or the Treasure Island Development Group. To learn more, please visit <https://tisf.com/> or scan the QR code.



9 Is there a gym on Treasure Island?

Yes! There is a YMCA on Treasure Island that offers free membership to island residents. The YMCA offers workout equipment, a basketball court and programming for children. To learn more, visit the TI YMCA at 749 9th St. or call: (415) 765-9037

FAQs cont.

10 Is there a library on Treasure Island?

Not yet! But there are options available on the island that make books accessible to residents. Located outside of the Island Cove Market is SFPL's very first Book Kiosk! Residents can also visit the BookMobile on Wednesdays, 2–6 PM at Avenue H & 11th Street.



11 What is the future park plan for TI?

Approximately 300 acres of the island will be set aside for open space, and all new landscaping will utilize native species. Other sustainable strategies include grey-water recycling, an extensive composting program, and the use of renewable grid-source power to meet the island's energy needs.



12 What can residents do for free on the island?

Island residents can enjoy the sites from every side of the island, utilize the island's parks, bask in the sun on Clipper Cove beach, work out at the YMCA and rent books from the Book Kiosk or BookMobile!

NOTES

A series of horizontal dotted lines for writing notes.

NOTES

A series of horizontal dotted lines for writing notes.

NOTES

A series of horizontal dotted lines for writing notes.



THANK YOU!

For joining and being an active member of the
Treasure Island Community.

